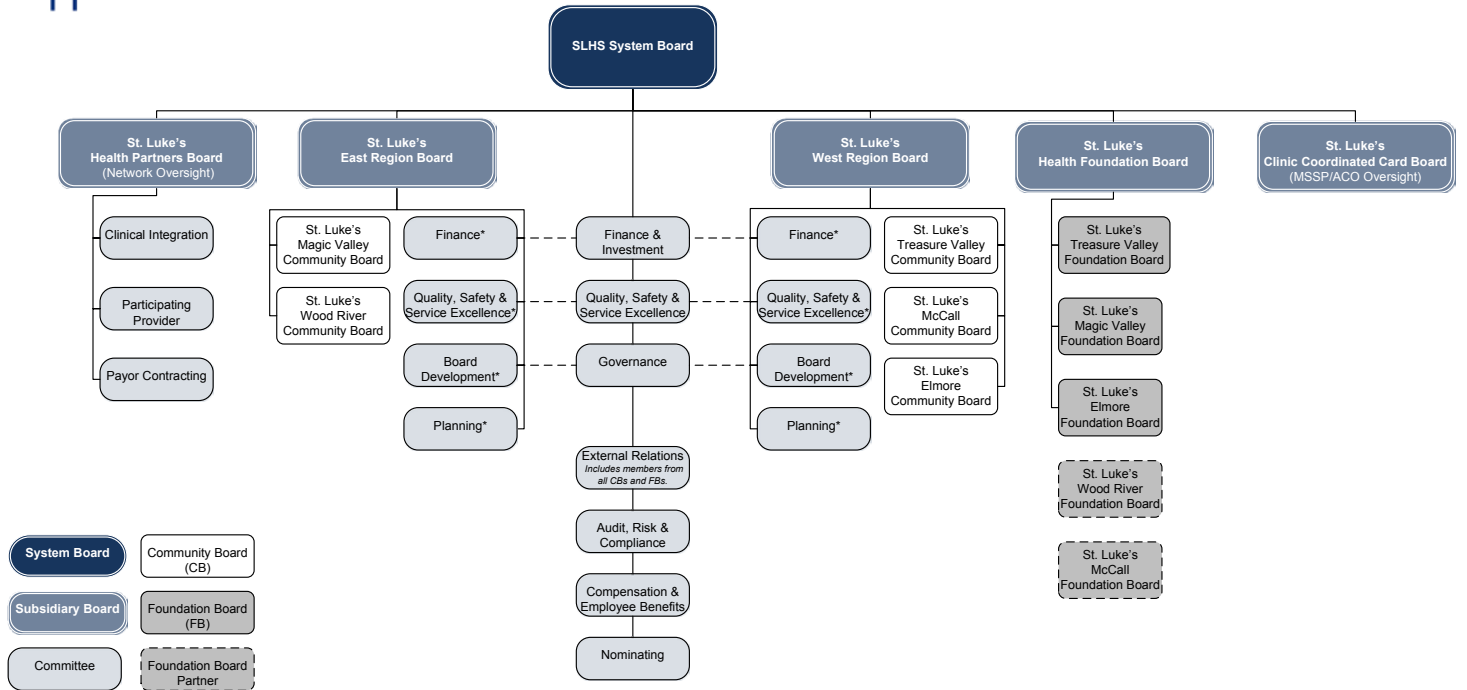


## Sample Multiple Board (Regional) System Structure (St. Luke's Health System)



<b>System Board</b>	Community Board (CB)
<b>Subsidiary Board</b>	Foundation Board (FB)
Committee	Foundation Board Partner

\* All East and West Region committees have representation from respective CBs.  
 --Chairs of East and West committees serve as members of related System committees.